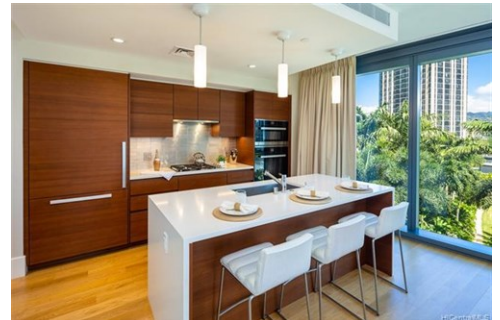


## Residential, High-Rise 7+ Stories - Honolulu, HI



\$ 1,200,000



1108 Auahi Street #908, Honolulu, HI 96814

- » Beds: 1 | Baths: 1 Full
- » MLS #: 202125299
- » Condominium | 927 ft<sup>2</sup>
- » More Info: [1108AuahiStreet908.IsForSale.com](http://1108AuahiStreet908.IsForSale.com)



Sherine Duncan  
(808) 554-2262 (Sherine's Contact #)  
[Sherine@hawaiiLuxhomes.com](mailto:Sherine@hawaiiLuxhomes.com)  
<http://www.HawaiiLUXhomes.com>

HAWAII  
LUX  
OF EXP REALTY RB-21841

eXp Realty  
500 Ala Moana Blvd - Suite 400  
Honolulu, HI 96813  
(808) 554-2262

Experience living at one of the most upscale and design-forward residences in the heart of Ward Village. This immaculately-kept Diamond Head/Mauka facing unit features 9ft ceilings, Ocean and Mountain views, Miele appliances, hard wood flooring, a walk-in closet and floor-to-ceiling double pane windows. Residents enjoy impressive resort-like amenities that include concierge service, an iconic glass bottom pool, lush green cabanas, fitness center, steam & sauna facilities, treatment rooms, kids room and playground, tennis and volleyball courts, putting green, golf simulator, library, movie theater, chef's kitchen & dining room, dog park, guest suites and much more. Located right across from Whole Foods Marketplace, you are steps away from Ala Moana Beach Park, Ward theater, a myriad of trendy eateries, boutiques, markets and salons.

